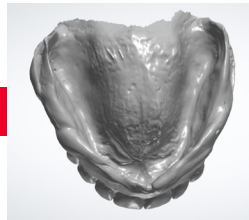


# REFERENCE DENTURE SCANNING

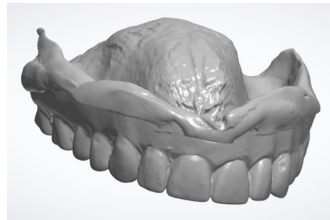
Starting with reference dentures is by far the quickest, easiest, most accurate way to create a digital denture. The vertical dimension is established and if the impression captures all the relevant data we can proceed to a delivery.

- Vertical is established
- Peripheral roll for the upper and lower
- Accurate Intaglio impression is taken
- Upper and or lower denture include facial and buccal of the denture.
- Scans of the upper and lower dentures are not watertight
- Bite scan is of the buccal and labial surface

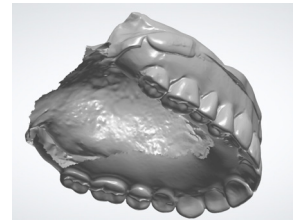
## Scan Upper Denture



Full scan of the intaglio surface. Scan distal of the vibrating line so the denture is not short of the Hamular notch, and a post damn can be established.

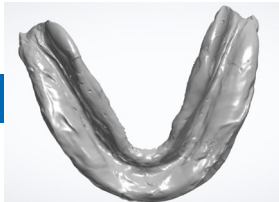


The scan should include buccal and facial surfaces of the denture. This aides in alignment and tooth selection.

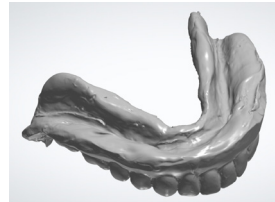


The denture scans cannot be watertight. If it is watertight 3Shape treats the scan as a model and dentures cannot be created.

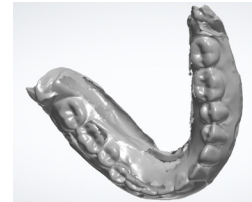
## Scan Lower Denture



Scan of the intaglio surface be sure to capture the peripheral roll and just distal of the retromolar pads.

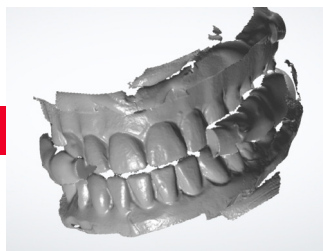


The scan should include buccal and facial surfaces of the denture. This aides in alignment and tooth selection.



The denture scans cannot be watertight. If it is watertight 3Shape treats the scan as a model and dentures cannot be created.

## Bite Scan



Bite scan should include facial and buccal surfaces so there is enough information for alignment and tooth selection. The scans are translated to an STL. format and lose the orientation information. The bite scans are required for use in 3Shape