



POINT-OF-CARE



OSOM[®] Mono Rapid Test

FOR THE DETECTION OF MONONUCLEOSIS ANTIBODIES IN WHOLE BLOOD, SERUM, OR PLASMA

Features and Benefits

- **Accurate** – High Sensitivity. High Specificity
- **Fast and Simple Workflow** – Easy-to-read two-color results, with results in 5 minutes
- **Convenient** – No age limit, can be used with patients of all ages
- **Simple** – CLIA-waived (for whole blood) with no additional equipment required
- **Exceptional Customer Service** – Online training modules and technical support staffed by certified medical technologists/professionals

Performance Characteristics

Sensitivity/Specificity	Sample Type	Storage Temperature	Time to Result
100% / 96%*	Whole Blood, Serum, or Plasma	15-30°C / 59-86°F	5 Minutes

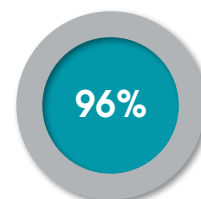
*Compared to EBV serological testing



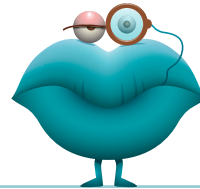
SENSITIVITY



SPECIFICITY

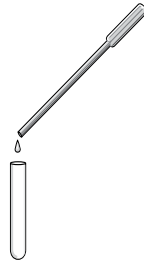


OSOM® Mono Rapid Test



Smooch

SIMPLE TO USE / RESULTS IN MINUTES



1 FOR SERUM, PLASMA OR WHOLE BLOOD SAMPLES: USE PROVIDED TRANSFER PIPETTE TO ADD ONE DROP TO TEST TUBE

OR



1 FOR FINGERTIP BLOOD; USE PIPETTE PROVIDED TO COLLECT AND DISPENSE SAMPLE



2 ADD 1 DROP OF DILUENT TO THE BOTTOM OF THE TEST TUBE AND MIX

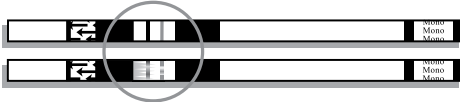


Results in 5 minutes

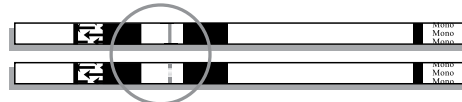
3 INSERT TEST STICK AND READ RESULTS AT 5 MINUTES

INTERPRETATION OF RESULTS

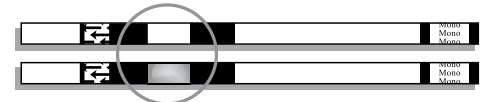
POSITIVE



NEGATIVE



INVALID



Ordering Information

	Configuration	Catalog Number	Storage	CPT Code (US only)
OSOM MONO TEST (CE MARKED)	25 tests	145	Room Temperature	Whole Blood: 86308QW Serum, Plasma: 86308

To learn more about all of our OSOM Tests scan the code or go to osomtests.com



THE AMERICAS

SEKISUI Diagnostics, LLC
One Wall Street
Burlington, MA 01803
Phone: 800 332 1042
Fax: 800 762 6311
Email: questions@sekisui-dx.com

INTERNATIONAL

SEKISUI Diagnostics (UK) Limited
Liphook Way, Allington
Maidstone, Kent, ME16 0LQ, UK
Phone: +44 1622 607800
Fax: +44 1622 607801
Email: info@sekisui-dx.com



SEKISUI
DIAGNOSTICS

Because every result matters™

sekisuidiagnostics.com